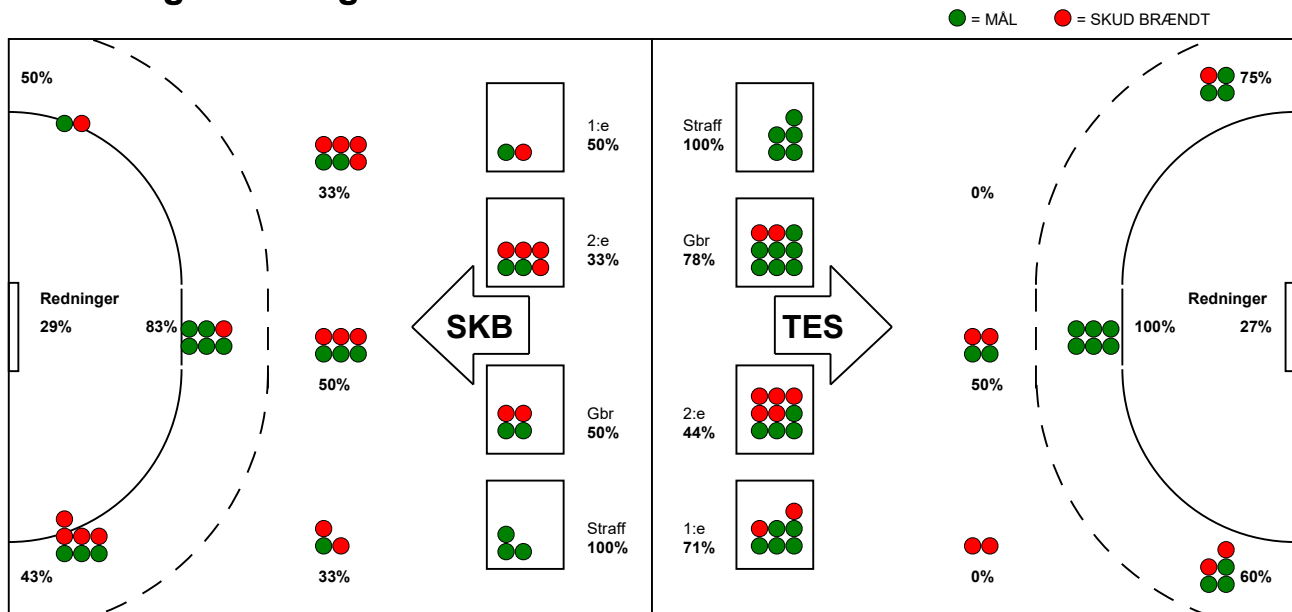


KAMPRAPPORT

Team Esbjerg - Skanderborg Håndbold 35 - 23 (19 - 12)

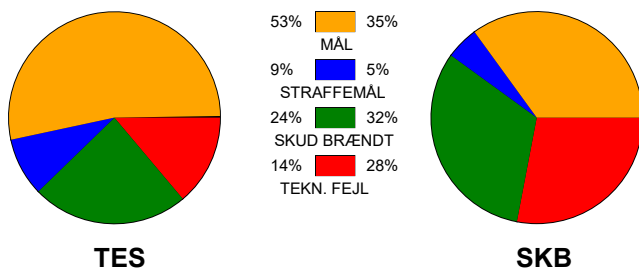
748230 / 6-11-2024 / Blue Water Dokken / Kvindeligaen

Fordeling af mål og skud:

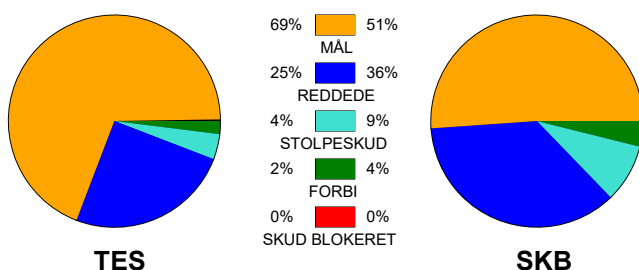


Gbr=Gennembrud. 1.f=Kontra første bølge. 2.f=Kontra anden bølge

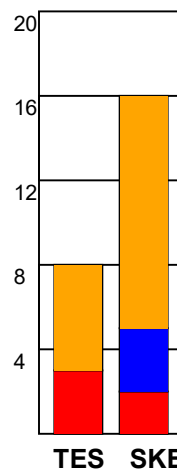
Angrebet sluttede med:



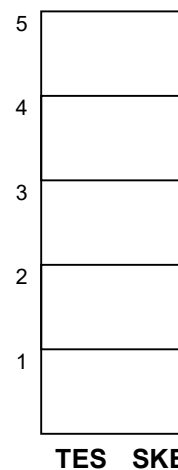
Skuddene endte med:



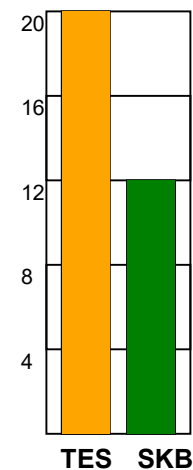
Tekn. Fejl



2 min



Assist



■ = REGELBRUD
■ = TABT BOLD
■ = FEJLAFLEVERING

Målforskel i løbet af kampen:

