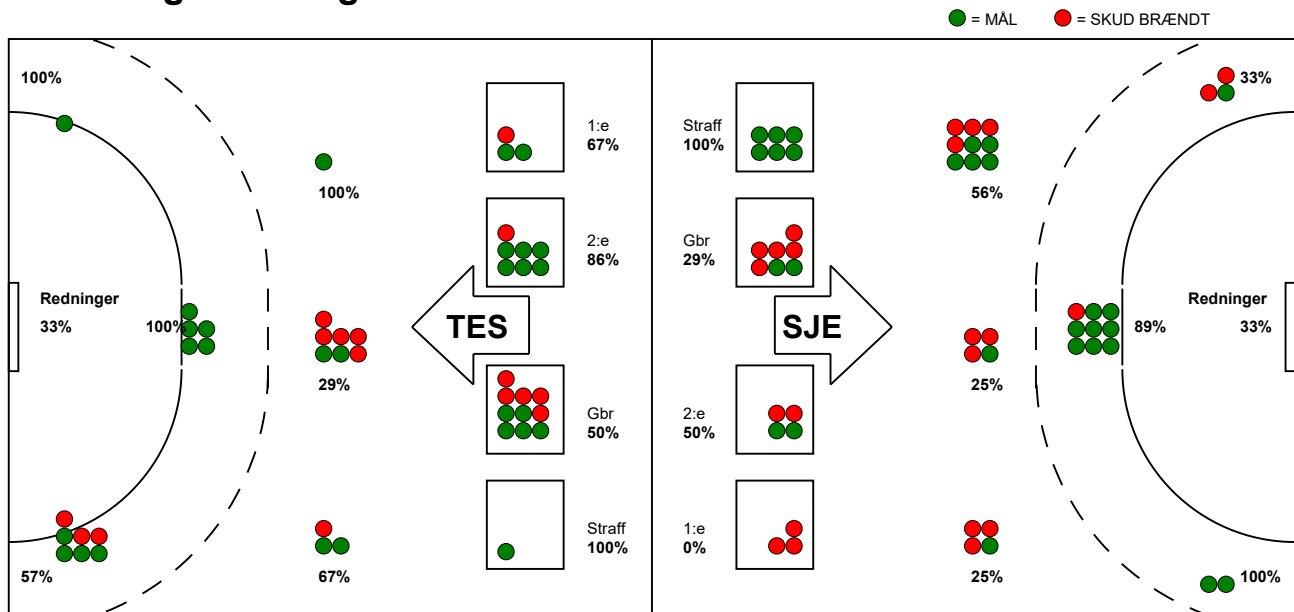


# KAMPRAPPORT

## SønderjyskE Kvinder - Team Esbjerg 28 - 29 (12 - 16)

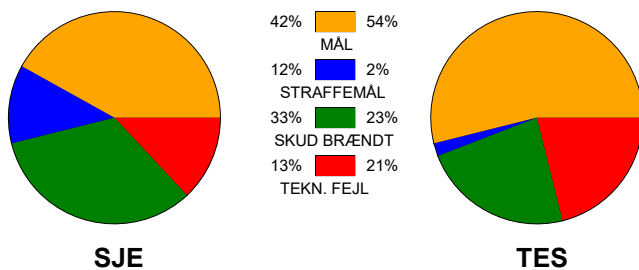
591313 / 20-9-2023 / Arena Aabenraa Hal 1 / Kvindeligaen

### Fordeling af mål og skud:

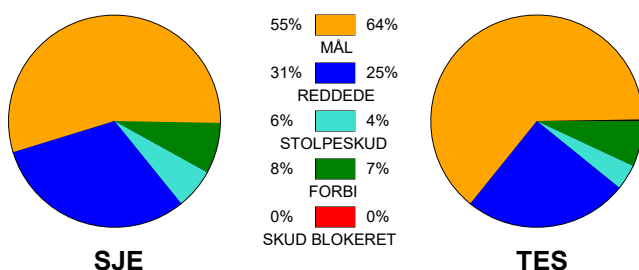


Gbr=Gennembrud. 1.f=Kontra første bølge. 2.f=Kontra anden bølge

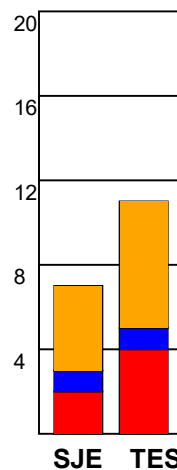
### Angrebet sluttede med:



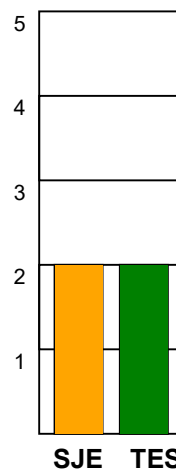
### Skuddene endte med:



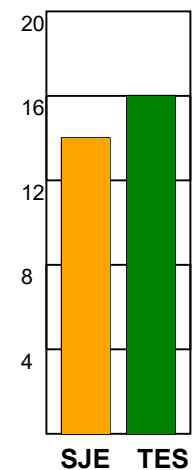
### Tekn. Fejl



### 2 min



### Assist



■ = REGELBRUD  
 ■ = TABT BOLD  
 ■ = FEJLAFLEVERING

### Målforskel i løbet af kampen:

